

KUKA Standard Products

## KS ELEMENTS FOR CLAMPING FIXTURES

A modular system to meet all your needs

Clamping and centering units are principally composed of the following elements:

- Pedestal bases
- Pedestal head plates
- Add-on parts
- Contour blocks
- Shims and spacers
- Angle shims and L-blocks
- Locating pins, centering pins
- Locating pin cylinder
- Pneumatic clamps (e.g. DESTACO, TUENKERS, GENIUS, GNOMO-Norm)

**Component-specific contour blocks**

**Standard clamp connection**

Left, right or both sides; accepts all common clamp models and sizes

**Pedestal head plate**

13 variants for practically any application

**Holding plate**

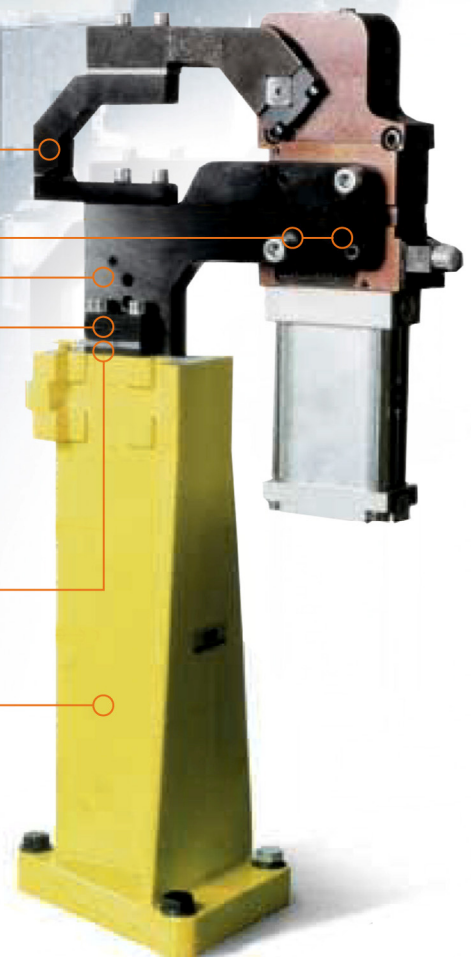
with heavy-duty split sleeve

**Shim package**

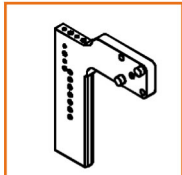
Easy adjustment of the entire clamping point

**Pedestal base**

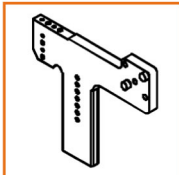
Cast construction (GGG 40 ductile cast iron); 3-point base with 2 fit bolts; maximum stiffness due to hollow T shape and FEM calculation



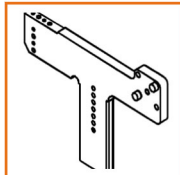
## Pedestal head plates



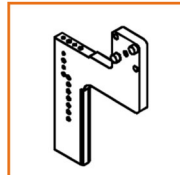
Art.-Nr. 05-486-446  
A = 145 | B = 20



Art.-Nr. 05-486-447  
A = 220 | B = 20



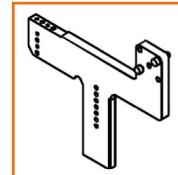
Art.-Nr. 05-486-448  
A = 295 | B = 20



Art.-Nr. 05-486-449  
A = 145 | B = 80



Art.-Nr. 05-486-450  
A = 220 | B = 80



Art.-Nr. 05-486-451  
A = 295 | B = 80



Art.-Nr. 05-486-452  
A = 145 | B = 140



Art.-Nr. 05-486-453  
A = 220 | B = 140



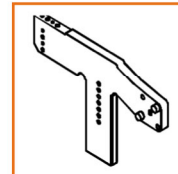
Art.-Nr. 05-486-454  
A = 295 | B = 140



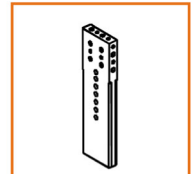
Art.-Nr. 05-486-455  
A = 145 | B = 40



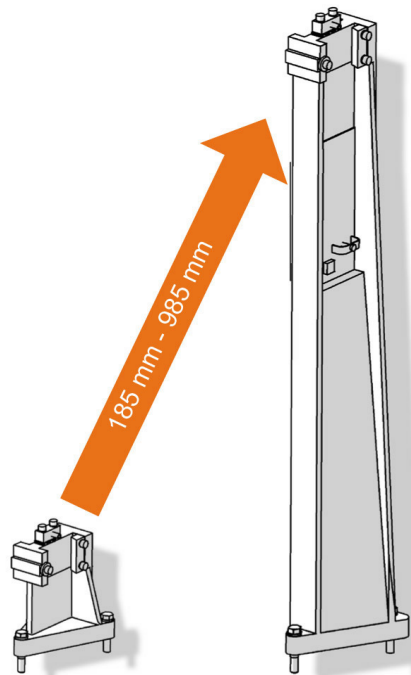
Art.-Nr. 05-486-456  
A = 220 | B = 40



Art.-Nr. 05-486-457  
A = 295 | B = 40



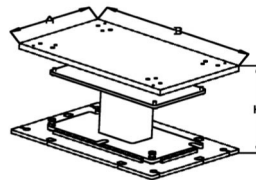
Art.-Nr. 05-486-487



### Pedestal head plates

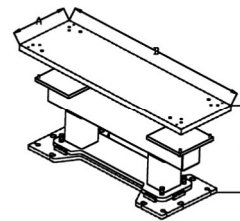
The KUKA modular system features 13 standard pedestal head plates for mounting single and multiple clamping points, centering pins, locating pin cylinders, supports, etc. These can be used to implement practically any application.

The pedestal head plate can be used to adjust the height by up to 90 mm in steps of 15 mm. The head plate is fine-adjusted and fixed in position by means of the holding plate with its heavy-duty split sleeve.



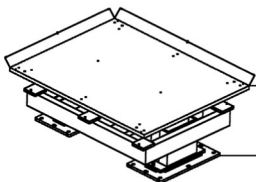
#### Plate base

Standard dimensions, height (H):  
300 mm - 1,100 mm  
Standard dimensions, length (B) x width (A):  
min. 300 x 600 mm  
max. 800 x 1,000 mm



#### Beam base

Standard dimensions, height (H):  
300 mm - 1,100 mm  
Standard dimensions, length (B) x width (A):  
min. 300 x 600 mm  
max. 1,300 x 1,600 mm



#### Double-footed base

Standard dimensions, height (H):  
400 mm - 1,100 mm  
Standard dimensions, length (B) x width (A):  
min. 620 x 1800 mm  
max. 1000 x 2,200 mm

### Pedestal bases

In nine different heights – from 185 mm to 985 mm – the pedestal bases are available as standard in steps of 100 mm. Depending on the pedestal base / pedestal head plate combination used, a height of between 270 mm and 1170 mm can be achieved.

KUKA Systems GmbH | Bluecherstrasse 144 | 86165 Augsburg | Germany  
Tel. + 49 821 797-0 | Fax + 49 821 797-1991 | info@kuka.de | www.kuka.com

#### International

Benelux | Brazil | China | France | Germany | India | Mexico | Norway | Russia  
Slovakia | South Korea | Sweden | UK | USA

# KUKA