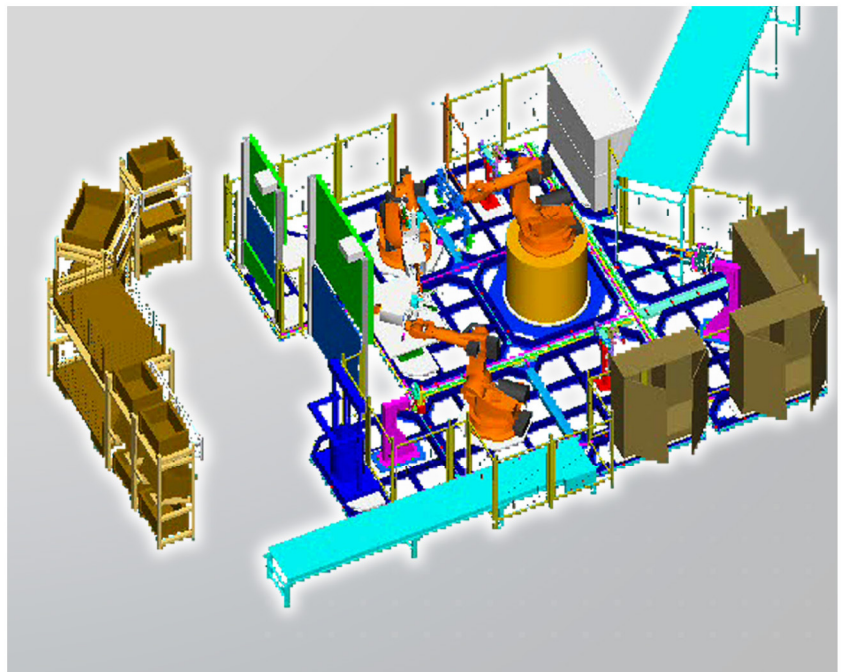
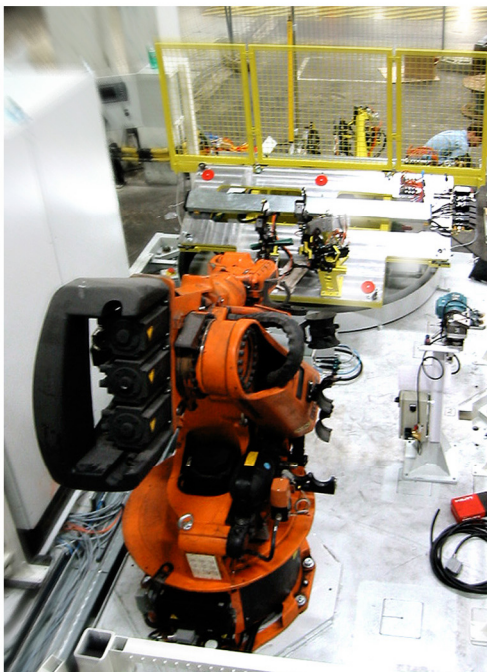
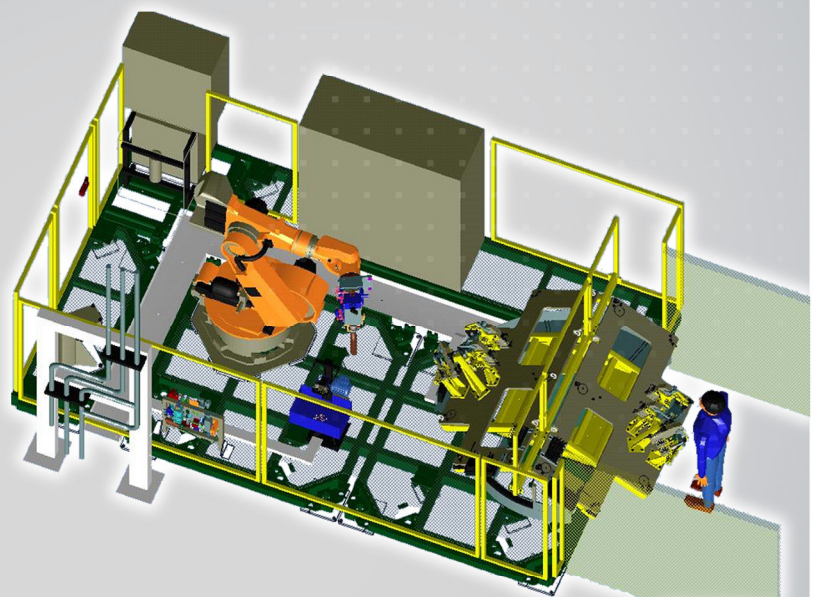


KUKA

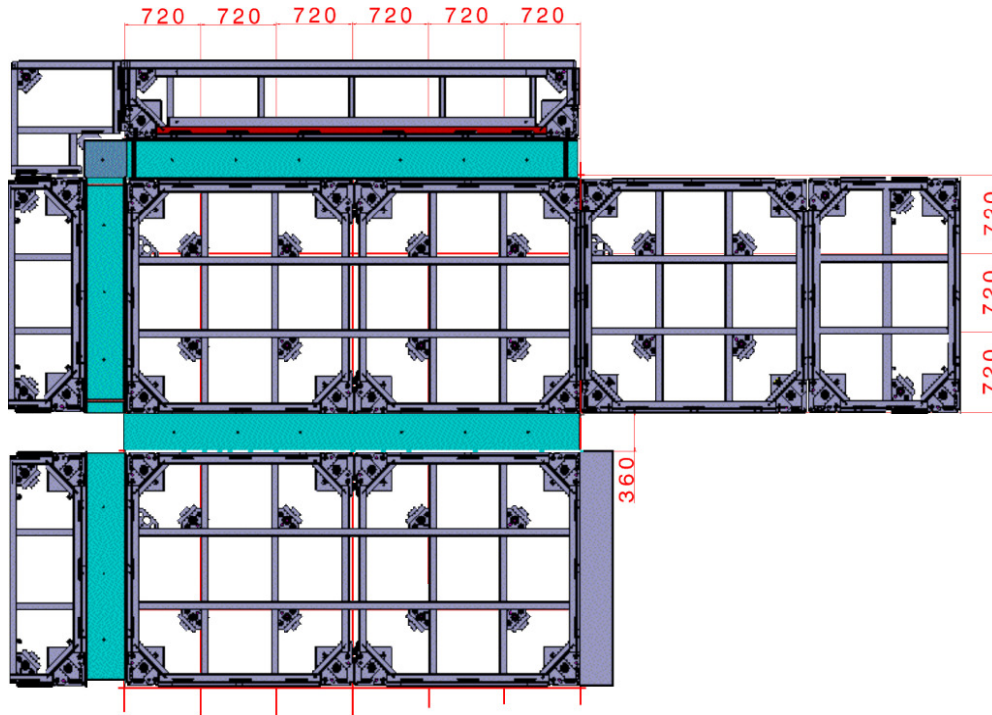
KUKA Standard Products

KS VARIOCELL

VARIOCELL IS USED FOR FAST
RELOCATION / REPOSITIONING OF
SYSTEM COMPONENTS



KS VARIOCELL



OPTIMIZED RELOCATION DUE TO:

- Reduced cost and assembly time for relocating and reinstalling the line / cell
- Cable and hose installations easily accessible from outside, no labor-intensive feeding of supply lines necessary (risk of damage minimized)
- All external elements connected to the KS Variocell
- Connector modules for electric cables
Threaded connections for air/water (possibly with quick-action fasteners)
- Easy access to the fastening points of the base frame

STANDARD ELEMENTS:

- Single element
- Double element
- 1/3 element
- 2/3 element
- Electrical enclosure element
- Corner element
- Installation duct

THE CELL ELEMENTS CAN BE TRANSPORTED USING:

- Fork lift truck
- Pallet truck
- Heavy load rollers
- Crane

Specifications regarding the characteristics and usability of the products do not constitute a warranty of properties. They are intended to serve informative purposes only. Some items of equipment depicted in the illustrations are optional, and are not included in the standard scope of supply. Solely the respective contract of sale shall be binding in respect of the extent of our supplies.

KUKA Systems GmbH | Bluecherstrasse 144 | 86165 Augsburg | Germany
Tel. + 49 821 797-0 | Fax + 49 821 797-1991 | info@kuka.de | www.kuka.com

International

Benelux | Brazil | China | France | Germany | India | Mexico | Norway | Russia
Slovakia | South Korea | Sweden | UK | USA

KUKA